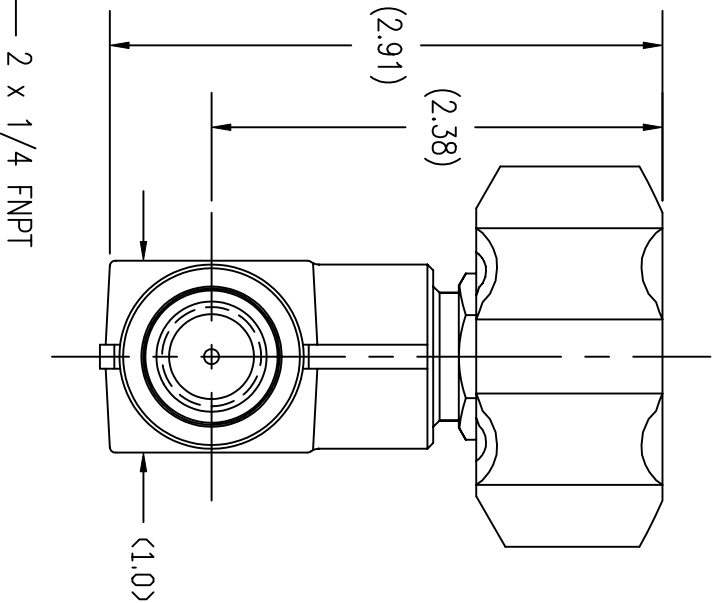


UNCONTROLLED  
FOR REFERENCE  
ONLY  
MB 3/4/2008



ITEM	PART NAME	MATERIAL	QTY
1	BODY	316L SST	1
2	SEAT INSERT	PCTFE	1
3	DIAPHRAGM ASSY.	316L SST/COPPER	1
4	BONNET	303 SST	1
5	UPPER STEM	416 SST	1
6	HANDLE	ABS PLASTIC	1
7	WASHER	18-8 SST	1
8	SCREW	18-8 SST	1
9	LOWER STEM	316L SST	1
10	SPRING	316L SST	1
11	LABEL	VINYL/MYLAR	1

SPECIFICATIONS:  
 PRESSURE RATING: 3000 PSIG  
 TEMPERATURE LIMITS: -65°F TO 150°F  
 MAX. ALLOWABLE LEAKAGE: 2 X 10<sup>-8</sup> ATM CC/SEC  
 WETTED SURFACES: 316L SST, PCTFE

*GasFlo Products Inc.*  
*Fairfield, N.J.*

SALES DWG-SPRING TYPE DIAPHRAGM VALVE  
 STAINLESS STEEL-1/4FNPT X 1/4FNPT

THIS DOCUMENT CONTAINS INFORMATION THAT IS THE PROPRIETARY AND CONFIDENTIAL PROPERTY  
 OF GASFLO PRODUCTS INC. AND MAY BE USED ONLY FOR AUTHORIZED PURPOSES.  
 THIS DOCUMENT MAY NOT BE REPRODUCED WITHOUT GASFLO PRODUCTS INC. PRIOR WRITTEN CONSENT

MAT'L: SEE BOM  
 DWN: MB  
 SCALE: NTS  
 DATE: 11/21/07

DWG: SALES-VLV-ST-44SS-FF