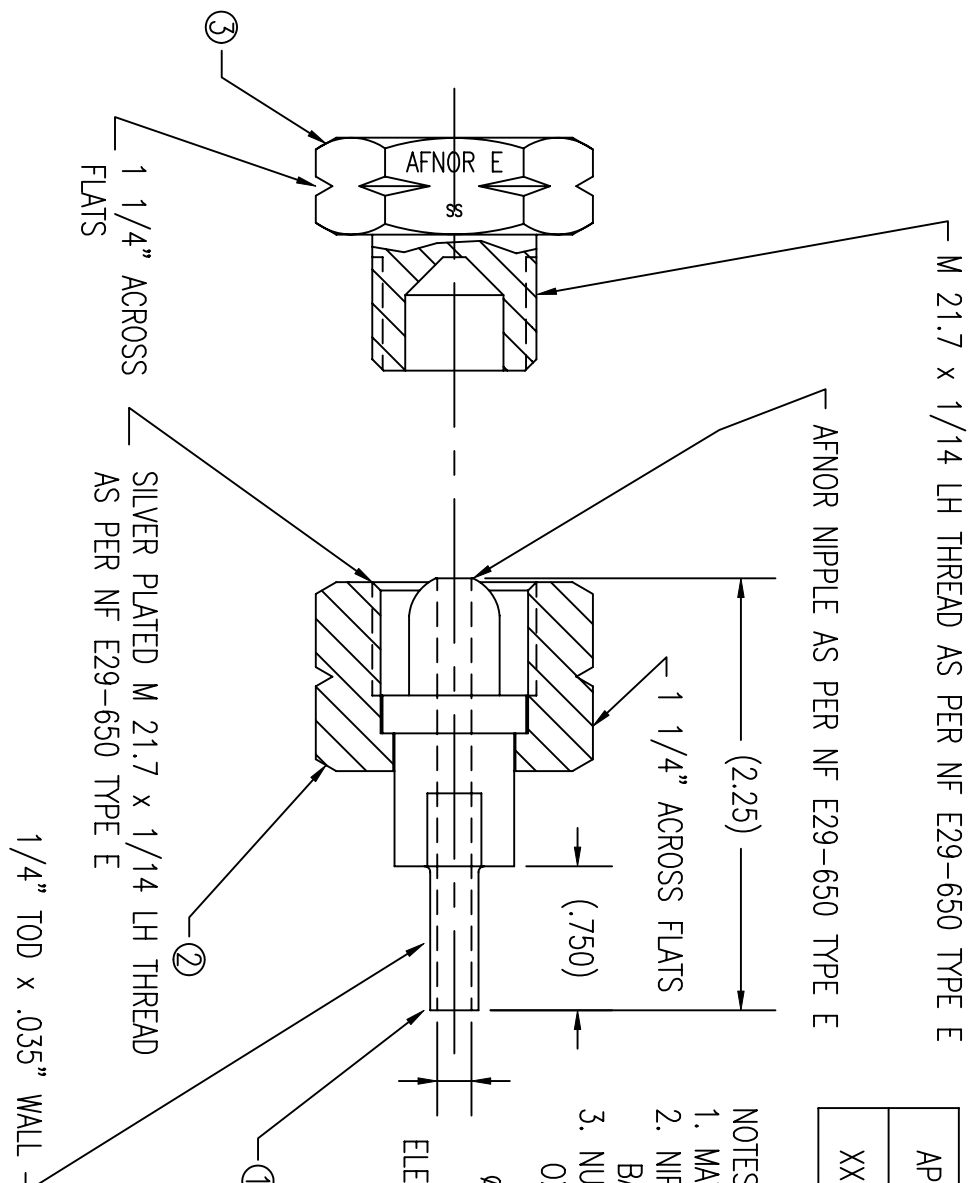


ITEM	COMPONENT NAME	MATERIAL	COMPONENT PN	QTY
1	NIPPLE	316L SST	NIP-AFNORCROSS-4TS-P	1
2	NUT	303 SST	NUT-AFNORESS	1
3	PLUG	303 SST	AD-AFNOREMSS-BL	1

AP PART NUMBER	GASFLO ASSY. PART NUMBER
XXX-XXXX	PT-AFNORESS-4TS



- NOTES:
1. MAWP: 3000 PSI
 2. NIPPLE IS D.I. ULTRACLEANED AND DOUBLE BAGGED.
 3. NUT & PLUG ARE CLEANED FOR OXYGEN SERVICE AND SINGLE BAGGED.

Ø.180 THRU,
9Rd MAX.,
ELECTROPOLISHED

UNCONTROLLED
For Reference Only
MB 10/17/2011

GasFlo Products Inc.
Fairfield, N.J.

AFNOR CYLINDER CONNECTION
TYPE E

THIS DOCUMENT CONTAINS INFORMATION THAT IS THE PROPRIETARY AND CONFIDENTIAL PROPERTY OF GASFLO PRODUCTS INC. AND MAY BE USED ONLY FOR AUTHORIZED PURPOSES. THIS DOCUMENT MAY NOT BE REPRODUCED WITHOUT GASFLO PRODUCTS INC. PRIOR WRITTEN CONSENT

DWN: MB
SCALE: NTS
DATE: 10/17/11

APPVD:
DWG: PT-AFNORESS-4TS